

KCP-11

▶ 稱重傳感器
LOAD CELL

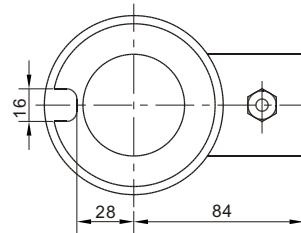
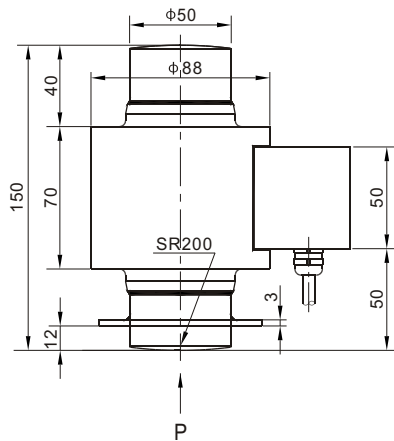
▶ 材質：不銹鋼 合金鋼
Materials: Stainless Steel Alloy Steel



INTERCHANGEABLE PRODUCTS

Manufacturer _____ Mode _____
Revere Transducers.....ASC

主要外形尺寸
Main Dimensions and Accessories



P View

量程 **Capacity:** 30t,40t,50t

▶ 主要技術指標
SPECIFICATIONS

◇靈敏度Rated Output(mV/V)	2.0±0.02	◇輸入電阻Input Resistance(Ω)	700±3.5
◇非線性Nonlinearity	±0.02%FS	◇輸出電阻Output Resistance(Ω)	700±7
◇滯后Hysteresis	±0.02%FS	◇絕緣電阻Insulation Resistance	≥5000MΩ
◇重復性Repeatability	±0.02%FS	◇供橋電壓Excitation Voltage	10V(DC/AC)
◇蠕變Creep(30minutes)	±0.02%FS	◇溫度補償範圍Compensated Temperature Range	-10℃~+50℃
◇零點輸出Zero Balance	±1.00%FS	◇使用溫度範圍Operating Temperature Range	-20℃~+60℃
◇零點溫度系數Temperature Effect on Zero	±0.02%FS/10℃	◇允許過載負荷Safe Overload	120%FS
◇額定輸出溫度系數Temperature Effect on Output	±0.02%FS/10℃	◇連接電纜Cable	Φ5.4×15m

連接方法Cable Color Code

Input: Red(+) Black(-); Output: Green(+) White(-)
輸入: 紅(+) 黑(-); 輸出: 綠(+) 白(-)