

KET-1A

吊秤專用傳感器

SPECIAL LOAD CELL
FOR CRANE SCALE

材質：合金鋼

Material: Alloy Steel

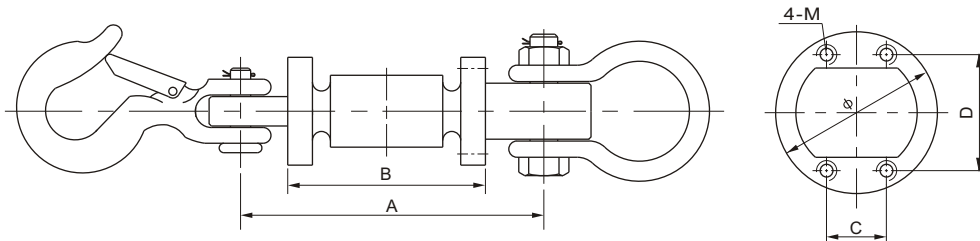


KET-1A型稱重傳感器是吊鉤稱專用傳感器，彈性體采用整體合金鋼制作，具有過載能力強、精度高、抗偏載能力好等優點。在彈性體的上下端配套了專用的吊環、吊鉤組裝吊秤十分方便。

Special load cell for crane scale
Elastomer use integral alloy steel
High precision, strong overload protection capability and anti-deflective loading
With special ring and hook, easy to install

Main Dimensions and Accessories

主要外形尺寸



量程 Capacity t	尺寸 Size mm					
	A	B	C	D	Φ	M
1	130.0	74.0	16.0	37.0	48.0	M6
2	150.0	82.0	22.0	47.0	60.0	M6
3	150.0	82.0	22.0	47.0	60.0	M6
5	188.0	103.0	28.0	56.0	70.0	M6
10	230.0	120.0	28.0	66.0	80.0	M6

主要技術指標

SPECIFICATIONS

◇靈敏度Rated Output(mV/V)	1.5±0.025	◇輸入電阻Input Resistance(Ω)	765±15
◇非線性Nonlinearity	±0.02%FS	◇輸出電阻Output Resistance(Ω)	700±5
◇滯后Hysteresis	±0.02%FS	◇絕緣電阻Insulation Resistance	≥5000MΩ
◇重復性Repeatability	±0.01%FS	◇供橋電壓Excitation Voltage	10V(DC/AC)
◇蠕變Creep(30minutes)	±0.02%FS	◇溫度補償範圍Compensated Temperature Range	-10°C~+50°C
◇零點輸出Zero Balance	±1.00%FS	◇使用溫度範圍Operating Temperature Range	-20°C~+60°C
◇零點溫度系數Temperature Effect on Zero	±0.02%FS/10°C	◇允許過載負荷Safe Overload	300%FS
◇額定輸出溫度系數Temperature Effect on Output	±0.02%FS/10°C	◇連接電纜Cable	Φ4×0.5(1.0)m

連接方法Cable Color Code

Input: Red(+) Black(-); Output: Green(+) White(-);
輸入：紅(+) 黑(-)；輸出：綠(+) 白(-)；