

▶ KGF-2

▶ 橋式稱重傳感器

BRIDGE LOAD CELL

▶ 材質：合金鋼 不銹鋼

Materials: Alloy Steel Stainless Steel

INTERCHANGEABLE PRODUCTS

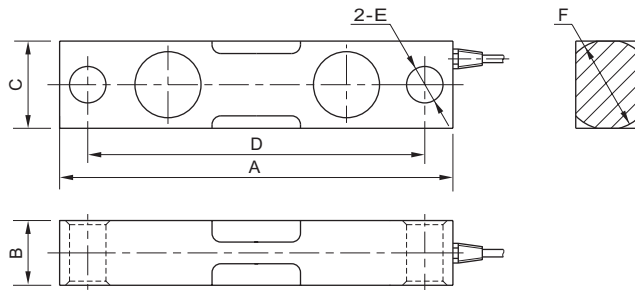


Manufacturer _____ Mode _____

Rice Lake Weighing Systems.....RL75016
 Sensortronics.....65016
 Revere.....5203
 Celtron.....DSR
 Artech.....70510
 Cotiinc.....CI-16

Main Dimensions and Accessories

主要外形尺寸



量程 Capacity Klb	尺寸 Size mm					
	A	B	C	D	E	F
1-5	190.5	31.0	31.0	158.8	13.0	31.5
10-25	222.2	36.5	49.3	190.5	19.0	50.5
50-75	343.0	62.0	75.0	292.0	33.3	76.2

▶ 主要技术指标

SPECIFICATIONS

◇靈敏度Rated Output(mV/V)	3.00±0.01	◇輸入電阻Input Resistance(Ω)	700±10
◇非線性Nonlinearity	±0.02%FS	◇輸出電阻Output Resistance(Ω)	700±3
◇滯后Hysteresis	±0.02%FS	◇絕緣電阻Insulation Resistance	≥5000MΩ
◇重復性Repeatability	±0.01%FS	◇供橋電壓Excitation Voltage	10V(DC/AC)
◇蠕變Creep(30minutes)	±0.02%FS	◇溫度補償範圍Compensated Temperature Range	-10℃~+50℃
◇零點輸出Zero Balance	±1.00%FS	◇使用溫度範圍Operating Temperature Range	-20℃~+60℃
◇零點溫度系數Temperature Effect on Zero	±0.02%FS/10℃	◇允許過載負荷Safe Overload	120%FS
◇額定輸出溫度系數Temperature Effect on Output	±0.02%FS/10℃	◇連接電纜Cable	Φ5 (Φ6) ×12m

連接方法Cable Color Code

Input: Red(+) Black(-); Output: Green(+) White(-)
 輸入：紅 (+) 黑 (-)；輸出：綠 (+) 白 (-)