

▶ KGF-3

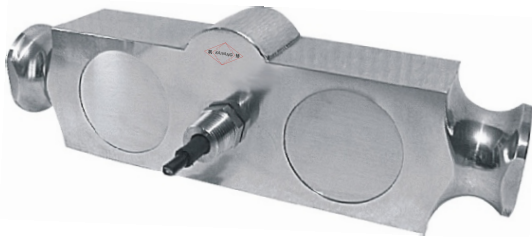
▶ 橋式稱重傳感器

BRIDGE LOAD CELL

▶ 材質：合金鋼 不銹鋼

Materials: Alloy Steel Stainless Steel

INTERCHANGEABLE PRODUCTS

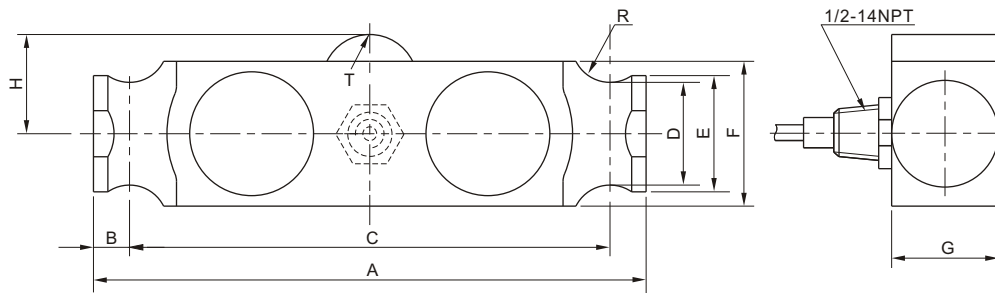


Manufacturer _____ Mode _____

Rice Lake Weighing Systems.....RL75040A
 Sensortronics.....65040A
 Celtron.....DLB
 Cotiinc.....BE40

Main Dimensions and Accessories

主要外形尺寸



量程 Capacity Klb	尺寸 Size mm									
	A	B	C	D	E	F	G	H	R	T
25-40	210.0	12.7	184.2	41.4	12.7	62.0	49.3	44.5	12.7	12.7
50-75	292.0	19.1	254.0	43.2	19.1	74.7	49.3	50.8	19.1	25.4
100-125	368.0	25.4	317.5	62.0	25.4	98.0	73.7	69.9	25.4	38.1

▶ 主要技术指标

SPECIFICATIONS

◇ 靈敏度 Rated Output (mV/V)	3.00±0.25	◇ 輸入電阻 Input Resistance (Ω)	700±10
◇ 非線性 Nonlinearity	±0.03%FS	◇ 輸出電阻 Output Resistance (Ω)	700±3
◇ 滯后 Hysteresis	±0.03%FS	◇ 絕緣電阻 Insulation Resistance	≥5000MΩ
◇ 重復性 Repeatability	±0.02%FS	◇ 供橋電壓 Excitation Voltage	10V(DC/AC)
◇ 蠕變 Creep (30minutes)	±0.03%FS	◇ 溫度補償範圍 Compensated Temperature Range	-10°C~+50°C
◇ 零點輸出 Zero Balance	±1.00%FS	◇ 使用溫度範圍 Operating Temperature Range	-20°C~+60°C
◇ 零點溫度係數 Temperature Effect on Zero	±0.03%FS/10°C	◇ 允許過載負荷 Safe Overload	120%FS
◇ 額定輸出溫度係數 Temperature Effect on Output	±0.03%FS/10°C	◇ 連接電纜 Cable	Φ6×10m

連接方法 Cable Color Code

Input: Red(+) Black(-); Output: Green(+) White(-)
 輸入：紅(+) 黑(-)；輸出：綠(+) 白(-)