

▶ KGF-4

▶ 橋式稱重傳感器
BRIDGE LOAD CELL

▶ 材質：合金鋼 不銹鋼
Materials: Alloy Steel Stainless Steel

INTERCHANGEABLE PRODUCTS

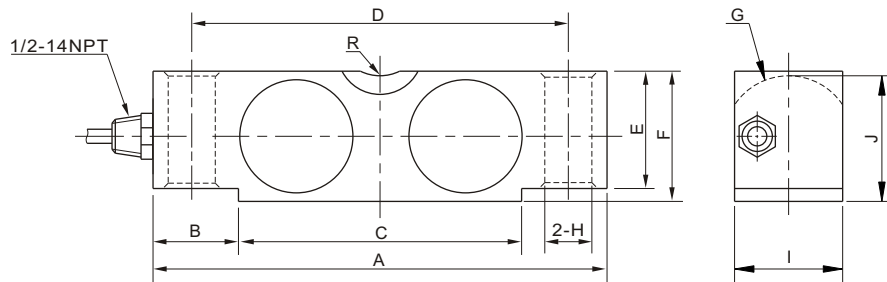


Manufacturer _____ Mode _____

Rice Lake Weighing Systems.....RL75058
Sensortronics.....65058
TedeA.....4158
Celtron.....CLB
Cotiinc.....CI-58

Main Dimensions and Accessories

主要外形尺寸



量程 Capacity Klb	尺寸 Size mm										
	A	B	C	D	E	F	G	H	I	J	R
10-25	197.0	35.0	127.0	165.0	43.2	49.3	22.9	18.0	43.4	47.5	19.0
40-50se	260.4	49.0	162.4	216.0	53.8	62.0	28.5	20.6	50.0	59.4	25.4
50-75	260.4	49.0	162.3	216.0	67.0	74.7	34.8	26.9	61.7	72.1	25.4
100-125	387.0	80.0	227.0	324.0	87.0	98.0	45.7	41.5	73.9	94.7	38.1
200	489.0	101.6	285.8	387.0	130.0	147.3	45.7	41.5	96.5	130.1	50.8

▶ 主要技术指标 SPECIFICATIONS

◇靈敏度Rated Output(mV/V)	3.00±0.01	◇輸入電阻Input Resistance(Ω)	770±10
◇非線性Nonlinearity	±0.03%FS	◇輸出電阻Output Resistance(Ω)	700±3
◇滯后Hysteresis	±0.03%FS	◇絕緣電阻Insulation Resistance	≥5000MΩ
◇重復性Repeatability	±0.02%FS	◇供橋電壓Excitation Voltage	10V(DC/AC)
◇蠕變Creep(30minutes)	±0.03%FS	◇溫度補償範圍Compensated Temperature Range	-10°C~+50°C
◇零點輸出Zero Balance	±1.00%FS	◇使用溫度範圍Operating Temperature Range	-20°C~+60°C
◇零點溫度系數Temperature Effect on Zero	±0.03%FS/10°C	◇允許過載負荷Safe Overload	120%FS
◇額定輸出溫度系數Temperature Effect on Output	±0.03%FS/10°C	◇連接電纜Cable	Φ6×10m

連接方法Cable Color Code

Input: Red(+) Black(-); Output: Green(+) White(-)
輸入：紅(+) 黑(-)；輸出：綠(+) 白(-)