

▶ KGF-7

▶ 橋式稱重傳感器
BRIDGE LOAD CELL

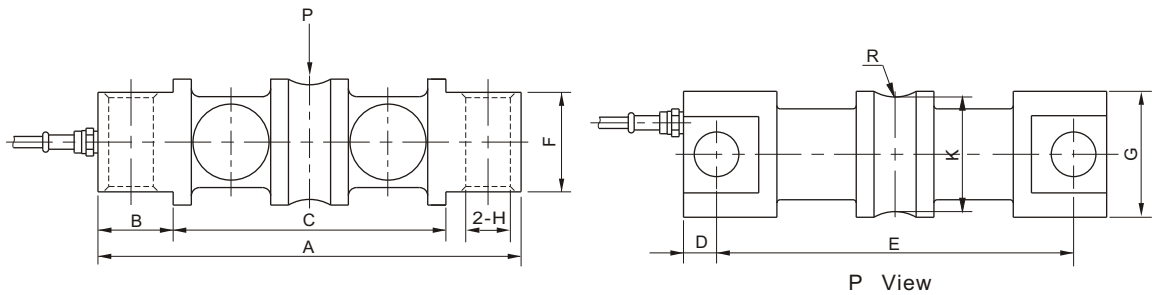
▶ 材質：合金鋼 不銹鋼
Materials: Alloy Steel Stainless Steel

INTERCHANGEABLE PRODUCTS



Manufacturer	Model
Rice Lake Weighing Systems.....	RL70000
Revere Transducers.....	5103
Celtron.....	CSB
Artech.....	70210
Cotiinc.....	CI-5103

Main Dimensions and Accessories
主要外形尺寸



量程 Capacity Klb	尺寸 Size mm									
	A	B	C	D	E	F	G	H	K	R
5-10	206.0	36.5	133.0	15.7	174.6	28.5	43.2	16.5	37.6	12.7
20	206.0	36.5	133.0	15.7	174.6	28.5	49.5	16.5	37.6	12.7
30-60	260.0	47.5	165.0	22.0	216.0	60.2	76.2	27.0	69.3	25.4
100	286.0	47.5	190.5	22.4	241.3	63.5	88.0	27.0	82.3	38.1
150	286.0	47.5	190.5	22.4	241.3	71.1	89.0	27.0	82.3	38.1
200	409.0	77.5	254.0	39.5	330.0	116.7	137.0	40.0	131.0	50.8

▶ 主要技术指标 SPECIFICATIONS

◇靈敏度Rated Output(mV/V)	3.00±0.01	◇輸入電阻Input Resistance(Ω)	700±10
◇非線性Nonlinearity	±0.03%FS	◇輸出電阻Output Resistance(Ω)	700±3
◇滯后Hysteresis	±0.03%FS	◇絕緣電阻Insulation Resistance	≥5000MΩ
◇重複性Repeatability	±0.02%FS	◇供橋電壓Excitation Voltage	10V(DC/AC)
◇蠕變Creep(30minutes)	±0.03%FS	◇溫度補償範圍Compensated Temperature Range	-10℃~+50℃
◇零點輸出Zero Balance	±1.00%FS	◇使用溫度範圍Operating Temperature Range	-20℃~+60℃
◇零點溫度系數Temperature Effect on Zero	±0.03%FS/10℃	◇允許過載負荷Safe Overload	120%FS
◇額定輸出溫度系數Temperature Effect on Output	±0.03%FS/10℃	◇連接電纜Cable	Φ6×10m

連接方法Cable Color Code

Input: Red(+) Black(-); Output: Green(+) White(-)
輸入：紅(+) 黑(-)；輸出：綠(+) 白(-)