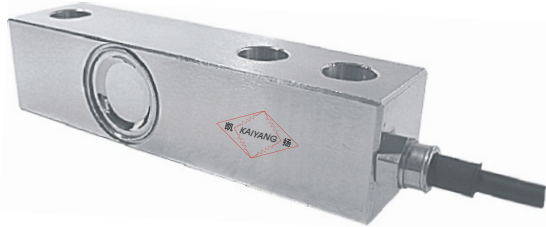


# KGX-1

## ▶ 懸臂梁稱重傳感器 SHEAR BEAM LOAD CELL

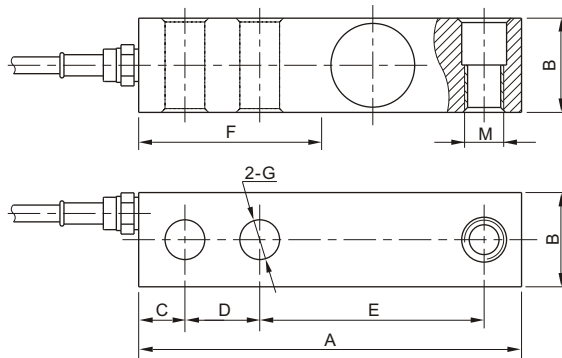
▶ 材質：合金鋼 不銹鋼  
Materials: Alloy Steel Stainless Steel

### INTERCHANGEABLE PRODUCTS



Manufacturer	Model
Rice Lake Weighing Systems.....	RL35083 RL39123
Sensotronics.....	.65023s
Celtron.....	SQB SS
Revere.....	.9123
First Weigh.....	LC27
Artech.....	30310 SS
HBM.....	H35
Fairbanks.....	3-54786-1
Cotiinc.....	CI-23 SS

Main Dimensions and Accessories  
主要外形尺寸



量程 Capacity		尺寸 Size mm							螺紋 Thread M	
t	Klb	A	B	C	D	E	F	G	公制 mm	英制 Inch
0.05-2	0.1-5se	130.0	32.0	15.7	25.4	76.2	57.0	13.5	M12X1.75	1/2-20
2.5-5	5-10	171.5	38.0	19.1	38.1	95.3	76.0	20.0	M18X1.5	3/4-16
7.5-10	15-20	222.5	50.8	25.4	50.8	123.8	102.0	27.0	M24X2	1" -14

### ▶ 主要技术指标 SPECIFICATIONS

◇靈敏度Rated Output(mV/V)	2.00±0.01 3.00±0.01	◇輸入電阻Input Resistance(Ω)	385±10
◇非線性Nonlinearity	±0.02%FS	◇輸出電阻Output Resistance(Ω)	350±3
◇滯后Hysteresis	±0.02%FS	◇絕緣電阻Insulation Resistance	≥5000MΩ
◇重復性Repeatability	±0.01%FS	◇供橋電壓Excitation Voltage	10V(DC/AC)
◇蠕變Creep(30minutes)	±0.02%FS	◇溫度補償範圍Compensated Temperature Range	-10℃~+50℃
◇零點輸出Zero Balance	±1.00%FS	◇使用溫度範圍Operating Temperature Range	-20℃~+60℃
◇零點溫度系數Temperature Effect on Zero	±0.02%FS/10℃	◇允許過載負荷Safe Overload	120%FS
◇額定輸出溫度系數Temperature Effect on Output	±0.02%FS/10℃	◇連接電纜Cable	Φ5×6m(10m)

### 連接方法Cable Color Code

Input: Red(+) Black(-); Output: Green(+) White(-)  
輸入：紅(+) 黑(-)；輸出：綠(+) 白(-)