

KMS-1

► 稱重傳感器
TENSION LOAD CELL

► 材質：合金鋼 不銹鋼
Materials: Alloy Steel Stainless Steel

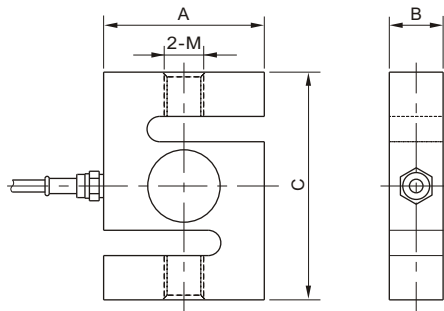


INTERCHANGEABLE PRODUCTS

Manufacturer	Model
Rice Lake Weighing Systems.....	RL20001
Sensortronics.....	60001
	60005
Centron.....	STC
Cotiinc.....	CISB

Main Dimensions and Accessories

主要外形尺寸



量程 Capacity		尺寸 Size mm			螺紋 Thread	
Klb	kg	A	B	C	公制 mm	英制 mm
0.025-0.1	5-50	51.0	13.0	64.0	M8X1.25	1/4-28
0.2-1.5	100-500	51.0	19.1	76.0	M12X1.75	1/2-20
2-4	1-2t	54.0	25.4	76.0	M12X17.5	1/2-20
5-10	2.5-5t	76.0	25.4	108.0	M18X1.5	3/4-16
20	10t	127.0	51.0	178.0	M30X2	1 1/4 -12
40	20t	140	60.0	188.0	M39X2	1 1/2 -12

► 主要技術指標 SPECIFICATIONS

◇靈敏度Rated Output(mV/V)	2.00±0.01 3.00±0.01	◇輸入電阻Input Resistance(Ω)	385±10
◇非線性Nonlinearity	±0.02%FS	◇輸出電阻Output Resistance(Ω)	350±3
◇滯后Hysteresis	±0.02%FS	◇絕緣電阻Insulation Resistance	≥5000MΩ
◇重復性Repeatability	±0.01%FS	◇供橋電壓Excitation Voltage	10V(DC/AC)
◇蠕變Creep(30minutes)	±0.02%FS	◇溫度補償範圍Compensated Temperature Range	-10℃~+50℃
◇零點輸出Zero Balance	±1.00%FS	◇使用溫度範圍Operating Temperature Range	-20℃~+60℃
◇零點溫度系數Temperature Effect on Zero	±0.02%FS/10℃	◇允許過載負荷Safe Overload	120%FS
◇額定輸出溫度系數Temperature Effect on Output	±0.02%FS/10℃	◇連接電纜Cable	Φ5×5m

連接方法Cable Color Code

Input: Red(+) Black(-); Output: Green(+) White(-)
輸入：紅(+) 黑(-)；輸出：綠(+) 白(-)