

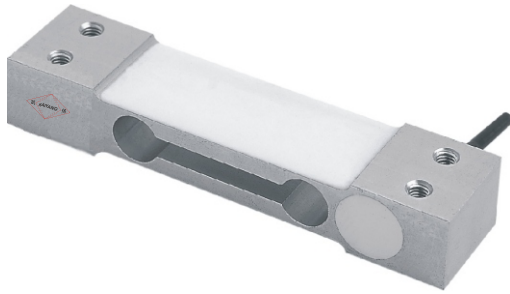
KPE-1

稱重傳感器

LOAD CELL

材質：鋁合金

Material: Aluminum

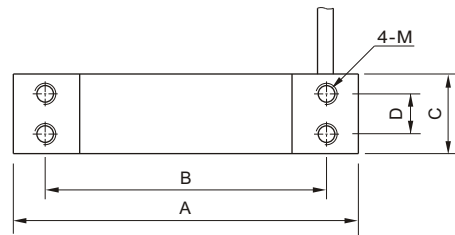
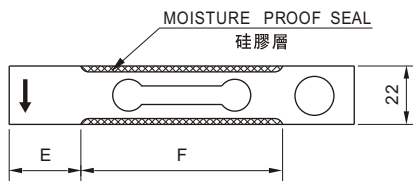


INTERCHANGEABLE PRODUCTS

Manufacturer _____ Mode _____

Rice Lake Weighing Systems.....RL1521
 BLH.....C2G1
 Fairbanks.....4900 Series Checkweighers
 NMB.....C2G1
 Tedeo-Huntleigh.....1022
 Celtron.....LPS
 Cotiinc.....CI-22

Main Dimensions and Accessories



最大稱臺面積：350×350 mm

量程 Capacity kg	尺寸 Size mm						
	A	B	C	D	E	F	M
1-3	70.0	58.0	15.0	7.0	12.0	46.0	M3
6-20	130.0	106.0	30.0	15.0	25.0	80.0	M6
25-35	130.0	106.0	40.0	15.0	25.0	80.0	M6
50-250	130.0	106.0	50.0	25.0	25.0	80.0	M8

主要技術指標

SPECIFICATIONS

◇靈敏度Rated Output(mV/V)	1.0±0.1(1-3kg)2±0.2(6-25kg)	◇輸入電阻Input Resistance(Ω)	410±10
◇非線性Nonlinearity	±0.02%FS	◇輸出電阻Output Resistance(Ω)	350±3
◇滯后Hysteresis	±0.02%FS	◇絕緣電阻Insulation Resistance	≥5000MΩ
◇重復性Repeatability	±0.01%FS	◇供橋電壓Excitation Voltage	10V(DC/AC)
◇蠕變Creep(30minutes)	±0.02%FS	◇溫度補償範圍Compensated Temperature Range	-10℃~+50℃
◇零點輸出Zero Balance	±1.00%FS	◇使用溫度範圍Operating Temperature Range	-20℃~+60℃
◇零點溫度系數Temperature Effect on Zero	±0.02%FS/10℃	◇允許過載負荷Safe Overload	120%FS
◇額定輸出溫度系數Temperature Effect on Output	±0.02%FS/10℃	◇連接電纜Cable	Φ4×0.4(3)m

連接方法Cable Color Code

Input: Red(+) Black(-); Output: Green(+) White(-)
 輸入：紅(+) 黑(-)；輸出：綠(+) 白(-)