

# KPE-10

► 稱重傳感器  
LOAD CELL

► 材質：合金鋼 不銹鋼  
Materials: Alloy Steel Stainless Steel

## INTERCHANGEABLE PRODUCTS

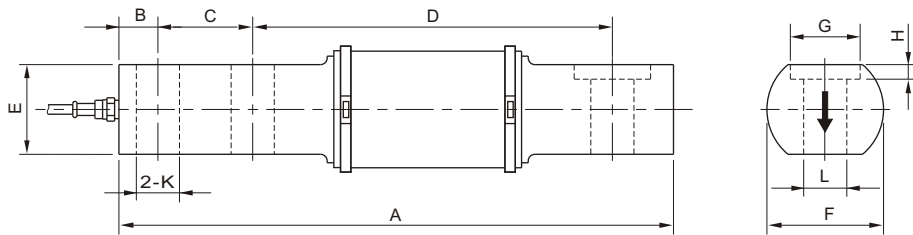


Manufacturer \_\_\_\_\_ Mode \_\_\_\_\_

Rice Lake Weighing Systems.....RL40BBS  
HBM.....BBBS1,BBS2  
BLH.....LBG1  
Fairbanks.....3-481XX-1,3-486XX-1  
Sensortronics.....60007  
Cotiinc.....CI-BBS

Main Dimensions and Accessories

主要外形尺寸



量程 Capacity kg	尺寸 Size mm									
	A	B	C	D	E	F	G	H	L	K
50-100	152.4	9.6	22.4	108.0	26.9	32.0	-	-	7.9	7.9
200-1000	168.4	12.7	28.6	108.0	26.9	32.0	-	-	13.0	13.0
1000Le-2500	289.0	12.7	44.5	209.6	31.8	50.8	32.5	3.0	15.8	13.0
5000-7500	323.8	19.0	50.8	215.9	70.0	89.0	35.0	4.6	19.7	20.0

## ► 主要技術指標 SPECIFICATIONS

◇靈敏度Rated Output(mV/V)	2.0±0.01	◇輸入電阻Input Resistance(Ω)	385±10
◇非線性Nonlinearity	±0.02%FS	◇輸出電阻Output Resistance(Ω)	350±3
◇滯后Hysteresis	±0.02%FS	◇絕緣電阻Insulation Resistance	≥5000MΩ
◇重復性Repeatability	±0.01%FS	◇供橋電壓Excitation Voltage	10V(DC/AC)
◇蠕變Creep(30minutes)	±0.02%FS	◇溫度補償範圍Compensated Temperature Range	-10℃~+50℃
◇零點輸出Zero Balance	±1.00%FS	◇使用溫度範圍Operating Temperature Range	-20℃~+60℃
◇零點溫度系數Temperature Effect on Zero	±0.02%FS/10℃	◇允許過載負荷Safe Overload	120%FS
◇額定輸出溫度系數Temperature Effect on Output	±0.02%FS/10℃	◇連接電纜Cable	φ5×6m

連接方法Cable Color Code

Input: Red(+) Black(-); Output: Green(+) White(-)  
輸入：紅(+) 黑(-)；輸出：綠(+) 白(-)