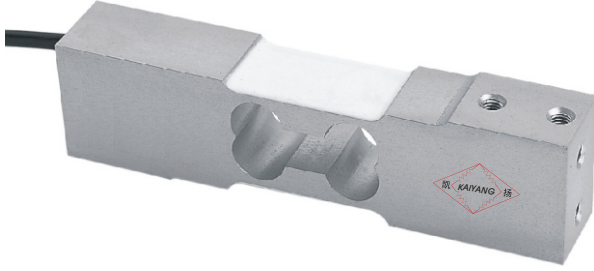


# KPE-2

## 稱重傳感器 LOAD CELL

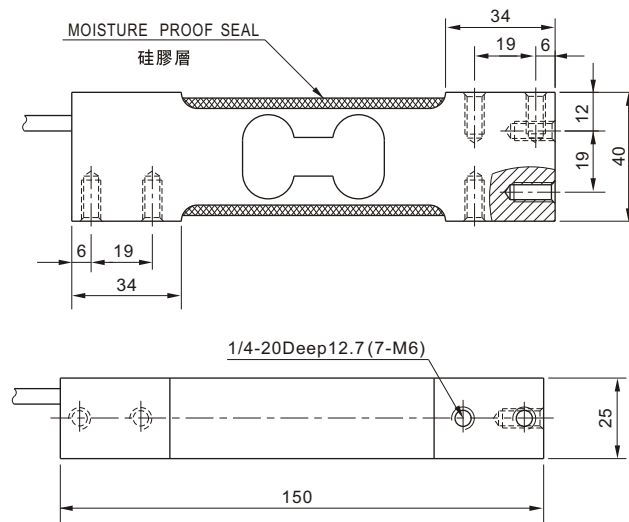
材質：鋁合金  
Material: Aluminum



### INTERCHANGEABLE PRODUCTS

Manufacturer	Model
Rice Lake Weighing Systems.....	RL1042
Rever Transducers.....	642
Tedea.....	1042
HBM.....	SP4
Scaime.....	AG
CAS.....	BCA
Cotiinc.....	CI-42

Main Dimensions and Accessories  
主要外形尺寸



量程 **Capacity**: 5, 10, 15, 20, 30, 50, 100, 200 lb  
3, 5, 10, 15, 20, 30, 50, 100 kg

最大稱臺面積：400×400 mm

### 主要技術指標 SPECIFICATIONS

◇靈敏度Rated Output(mV/V)	1.0±0.1(5lb,Kg) 2±0.2	◇輸入電阻Input Resistance(Ω)	410±10
◇非線性Nonlinearity	±0.02%FS	◇輸出電阻Output Resistance(Ω)	350±3
◇滯后Hysteresis	±0.02%FS	◇絕緣電阻Insulation Resistance	≥5000MΩ
◇重複性Repeatability	±0.01%FS	◇供橋電壓Excitation Voltage	10V(DC/AC)
◇蠕變Creep(30minutes)	±0.02%FS	◇溫度補償範圍Compensated Temperature Range	-10℃~+50℃
◇零點輸出Zero Balance	±1.00%FS	◇使用溫度範圍Operating Temperature Range	-20℃~+60℃
◇零點溫度系數Temperature Effect on Zero	±0.02%FS/10℃	◇允許過載負荷Safe Overload	120%FS
◇額定輸出溫度系數Temperature Effect on Output	±0.02%FS/10℃	◇連接電纜Cable	Φ5×3m

### 連接方法Cable Color Code

Input: Red(+) Black(-); Output: Green(+) White(-)  
輸入：紅 (+) 黑 (-) ; 輸出：綠 (+) 白 (-)