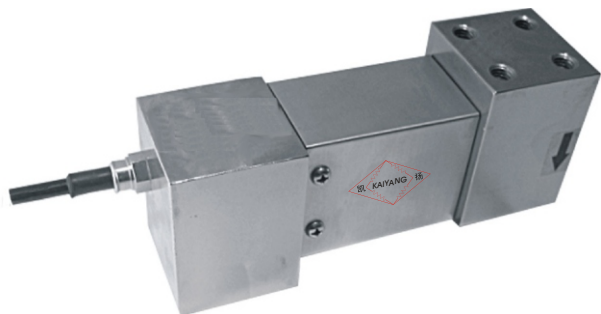


KPE-8

稱重傳感器 LOAD CELL

材質：合金鋼 不銹鋼
Materials: Alloy Steel Stainless Steel

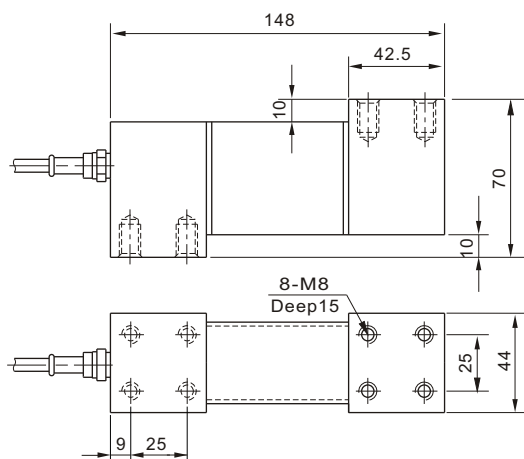


KPE-8型鋼制稱重傳感器，採用金屬外殼防護，且經過四角調整保證其在規定的受載平面內各點輸出一致。可用于制作由單只傳感器構成的各種形式電子臺秤、專用秤等、產品結構形式簡單、安裝使用方便。

Metallic crust protect
Corner adjusted before delivery to ensure consistent output in stated load plane
Simple to install, easy to use
Suitable for electronic platform scale, etc.

Main Dimensions and Accessories

主要外形尺寸



量程 **Capacity:** 20,30,50,70,100,150,200
250,300,500,700,1000 kg

最大稱臺面積：600×500 mm

主要技術指標 SPECIFICATIONS

◇靈敏度Rated Output(mV/V)	2±0.02	◇輸入電阻Input Resistance(Ω)	385±10
◇非線性Nonlinearity	±0.03%FS	◇輸出電阻Output Resistance(Ω)	350±3
◇滯后Hysteresis	±0.03%FS	◇絕緣電阻Insulation Resistance	≥5000MΩ
◇重復性Repeatability	±0.02%FS	◇供橋電壓Excitation Voltage	10V(DC/AC)
◇蠕變Creep(30minutes)	±0.03%FS	◇溫度補償範圍Compensated Temperature Range	-10°C~+50°C
◇零點輸出Zero Balance	±1.00%FS	◇使用溫度範圍Operating Temperature Range	-20°C~+60°C
◇零點溫度系數Temperature Effect on Zero	±0.03%FS/10°C	◇允許過載負荷Safe Overload	120%FS
◇額定輸出溫度系數Temperature Effect on Output	±0.03%FS/10°C	◇連接電纜Cable	Φ5×5m

連接方法Cable Color Code

Input: Red(+) Black(-); Output: Green(+) White(-)
輸入：紅(+) 黑(-)；輸出：綠(+) 白(-)